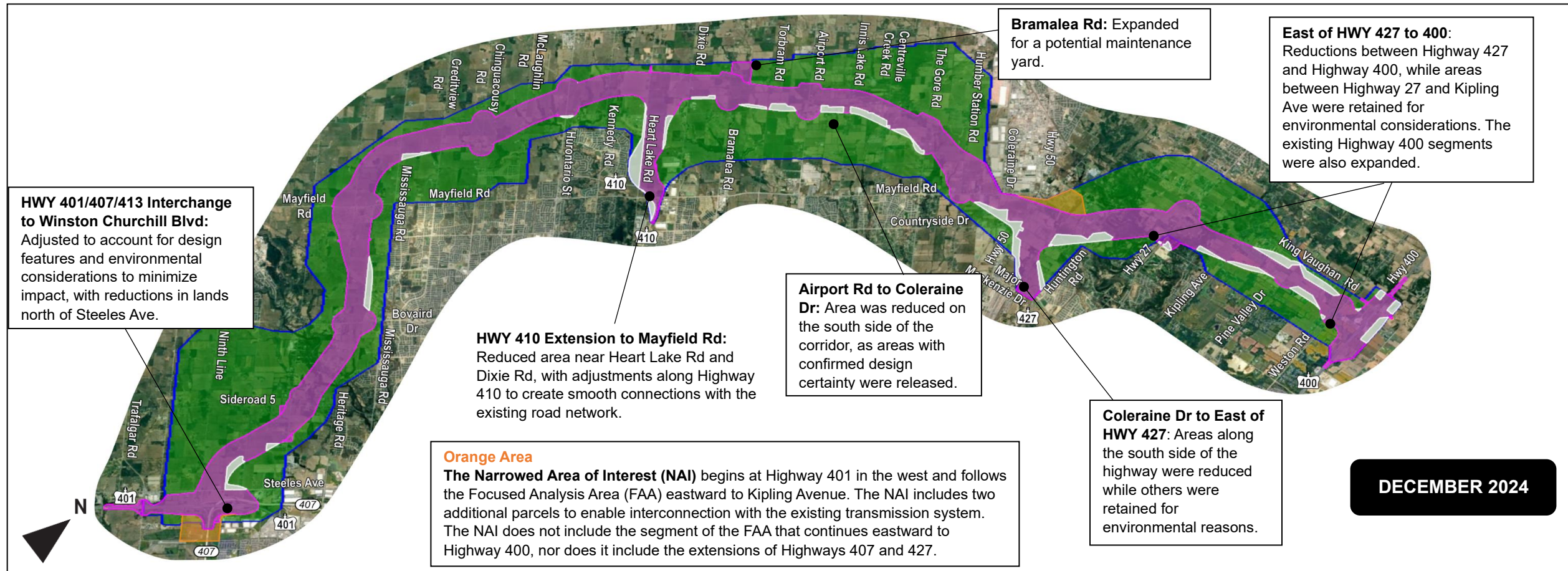


Currently in the planning and preliminary design phase, Highway 413 is a proposed 400-series highway, including a transitway and other features to support goods movement within the Greater Golden Horseshoe. This **Draft Focused Analysis Area (FAA)** prioritizes refinements based on stakeholder input, environmental data, and design advancements as details on potential impacts become more evident. These modifications reflect the latest designs and environmental studies, with areas of higher design certainty or minimal environmental impact excluded. **Changes from the 2020 FAA are outlined in white.** Feedback is welcomed at the contact points below, and input will be reviewed and addressed as necessary. This draft is being reviewed, and a finalized version is expected in early 2025. Until then, the 2020 FAA remains in effect and can be viewed on our consultation page at [Highway 413 - Consultation](https://www.highway413.ca). Note: concurrently, the Ministry of Energy and Electrification is consulting on refinements to the Narrowed Area of Interest (NAI), to support the planning of the Northwest Greater Toronto Area Transmission Corridor. The FAA and NAI overlap each other, except where each is protecting additional lands specific to its planned particular use.



**DECEMBER 2024**

**Purple Area**

The **Draft Focused Analysis Area (purple)** outlines the zone around Highway 413, identifying properties that remain of interest as the project advances. The highway, including any ancillary uses or adjustments made to the route during the preliminary design phase, may directly impact these properties.

**More Information**



For further details of the Draft Focused Analysis Area (FAA), visit the interactive map on the website using at [www.highway413.ca](https://www.highway413.ca) or to provide comments contact the project team via email at [project\\_team@highway413.ca](mailto:project_team@highway413.ca) or phone at 1-877-522-6916. Pour plus d'informations sur le projet de zone d'analyse focalisée (FAA) 2024, visitez le site web à l'aide de la carte interactive à l'adresse [www.highway413.ca](https://www.highway413.ca) ou, pour faire part de vos commentaires, contactez l'équipe du projet par courrier électronique à l'adresse [project\\_team@highway413.ca](mailto:project_team@highway413.ca) ou par téléphone **289-835-2484 (Yannick Garnier)**.

**Areas Outlined in White**

MTO has a reduced interest in properties located in areas outlined in white on the map. Applications can proceed through municipal development processes, and MTO will continue to review development applications in the study area, but it is anticipated that applications in the white outlined areas will not be directly impacted by Highway 413.

**Route Planning Study Area**

The geographical zone within the **(blue)** lined boundary is where various alternatives for the Highway 413 transportation corridor were considered.

<b>WEBSITE</b>		<a href="https://www.Highway413.ca">www.Highway413.ca</a>
<b>EMAIL</b>		<a href="mailto:project_team@highway413.com">project_team@highway413.com</a>
<b>TOLL-FREE</b>		<b>1-877-522-6916</b>