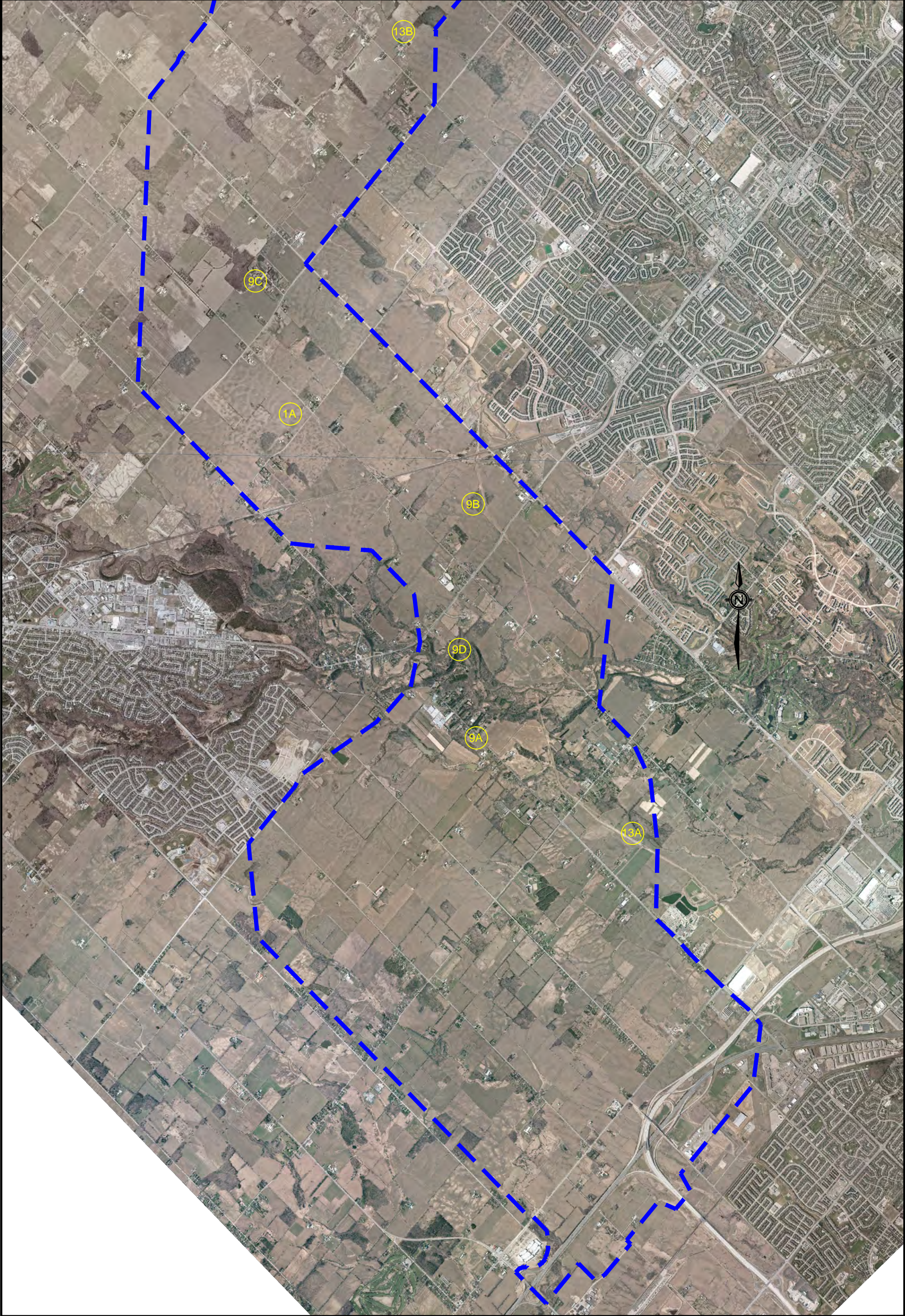






Appendix C





Station 3 Maps – Features Identified by Participants



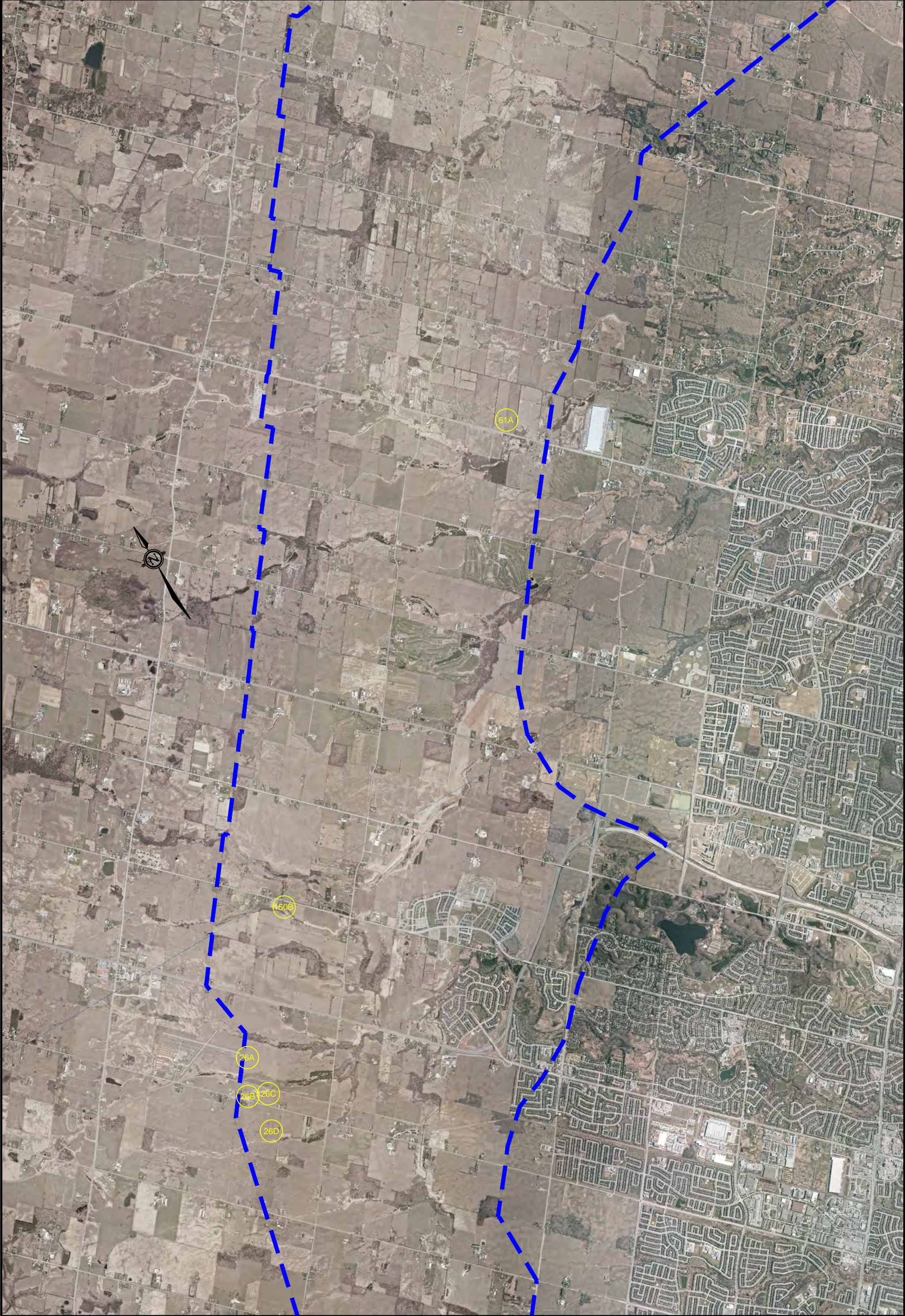
PROJECT: GTA WEST TRANSPORTATION CORRIDOR PLANNING AND EA STUDY, STAGE 2, G.W.P. 13-20001	SCALE: N.T.S.
   	TITLE: FEATURES MAPPING





Workshop 1 - Woodbridge
Part 1



PROJECT: GTA WEST TRANSPORTATION CORRIDOR PLANNING AND EA STUDY, STAGE 2, G.W.P. 13-20001	SCALE: N.T.S.
   	TITLE: FEATURES MAPPING





Workshop 1 - Woodbridge
Part 2



PROJECT: GTA WEST TRANSPORTATION CORRIDOR PLANNING AND EA STUDY, STAGE 2, G.W.P. 13-20001	SCALE: N.T.S.
   	TITLE: FEATURES MAPPING

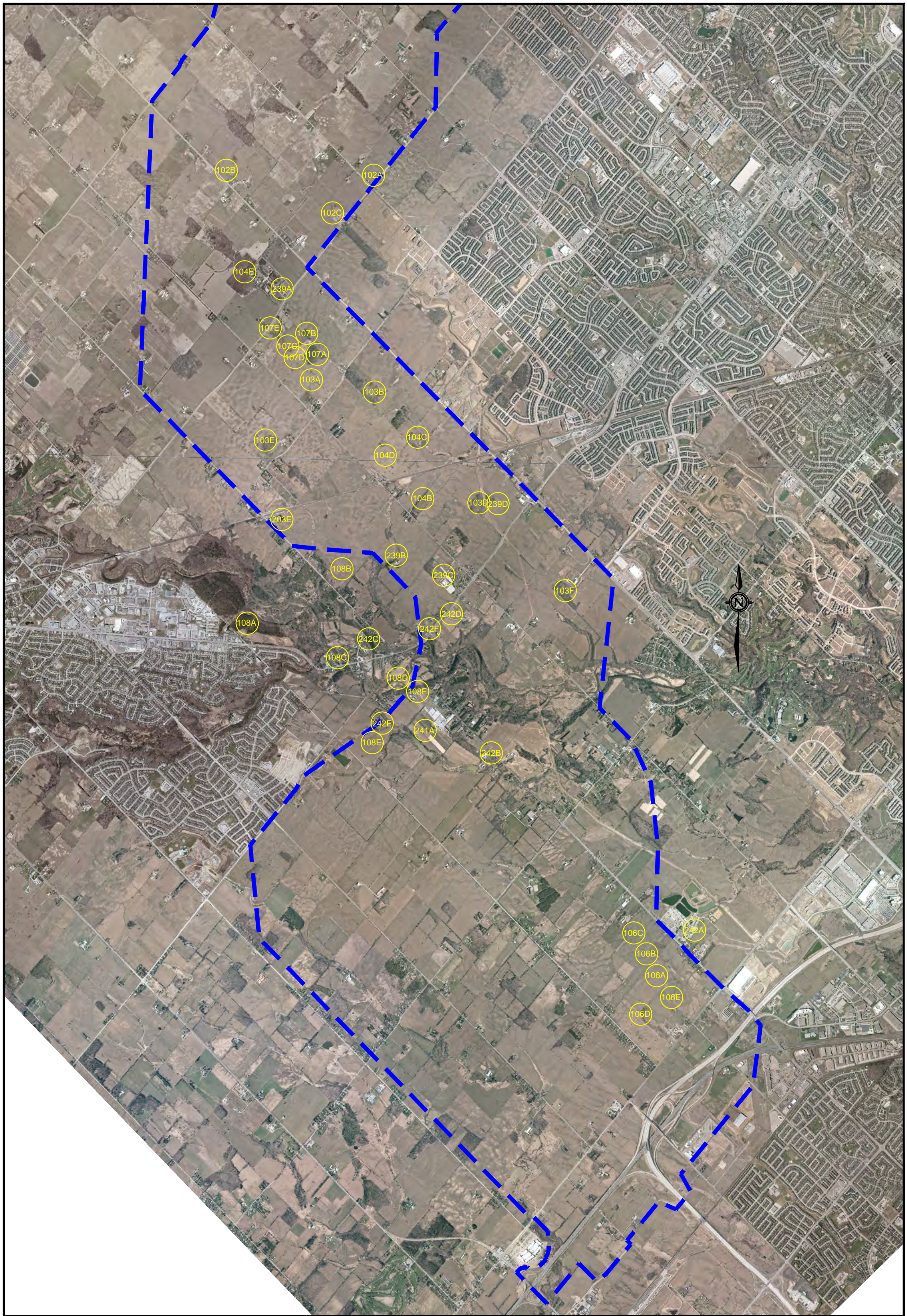
Workshop 2 - Mississauga
Part 2







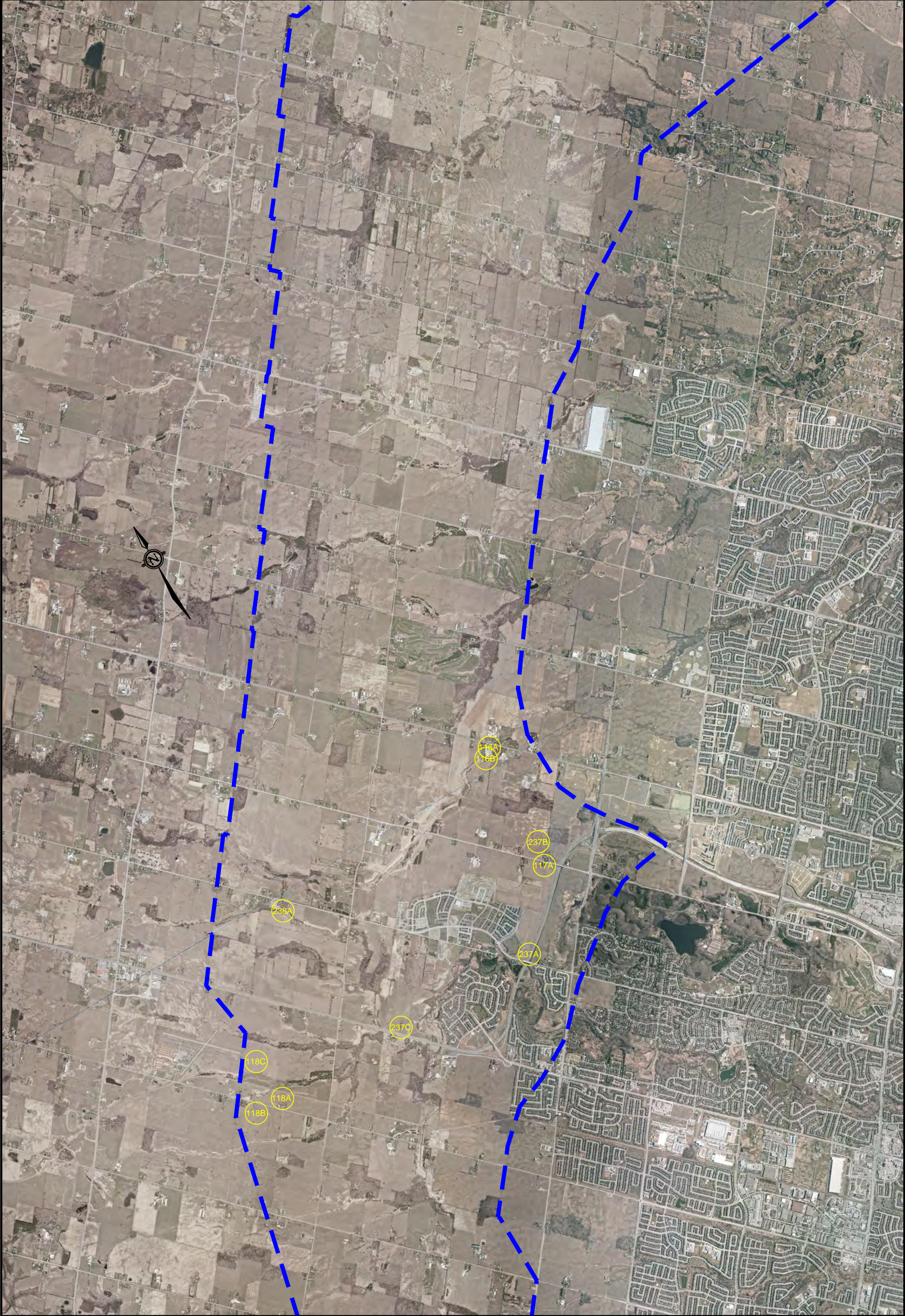
<div>PROJECT:</div> <div>GTA WEST TRANSPORTATION CORRIDOR PLANNING AND EA STUDY, STAGE 2, G.W.P. 13-20001</div>	<div>SCALE:</div> <div>N.T.S.</div>
<div><div><div>GTA West</div><div>Planning with Vision • Planning for People</div></div><div><div>MMM GROUP</div><div><div>AECOM</div><div><div>URS</div></div></div></div></div>	<div>TITLE:</div> <div>FEATURES MAPPING</div>





Workshop 2 - Mississauga

Part 3



PROJECT: GTA WEST TRANSPORTATION CORRIDOR PLANNING AND EA STUDY, STAGE 2, G.W.P. 13-20001	SCALE: N.T.S.	Workshop 3 - Brampton Part 1
   	TITLE: FEATURES MAPPING	



PROJECT: GTA WEST TRANSPORTATION CORRIDOR PLANNING AND EA STUDY, STAGE 2, G.W.P. 13-20001	SCALE: N.T.S.
   	TITLE: FEATURES MAPPING

Workshop 3 - Brampton
Part 2



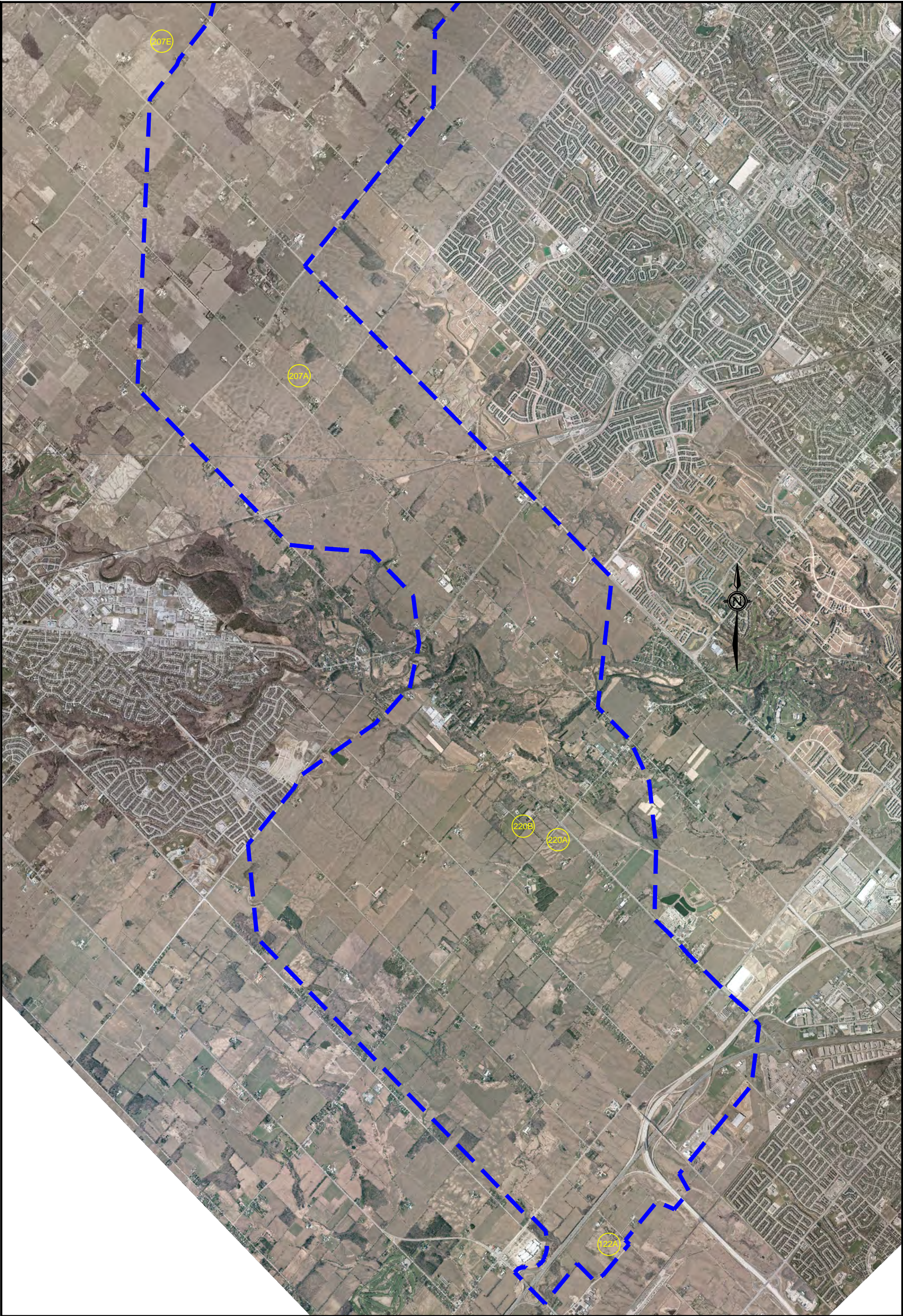
PROJECT:
GTA WEST TRANSPORTATION CORRIDOR
PLANNING AND EA STUDY,
STAGE 2, G.W.P. 13-20001





SCALE: N.T.S.

TITLE: FEATURES MAPPING

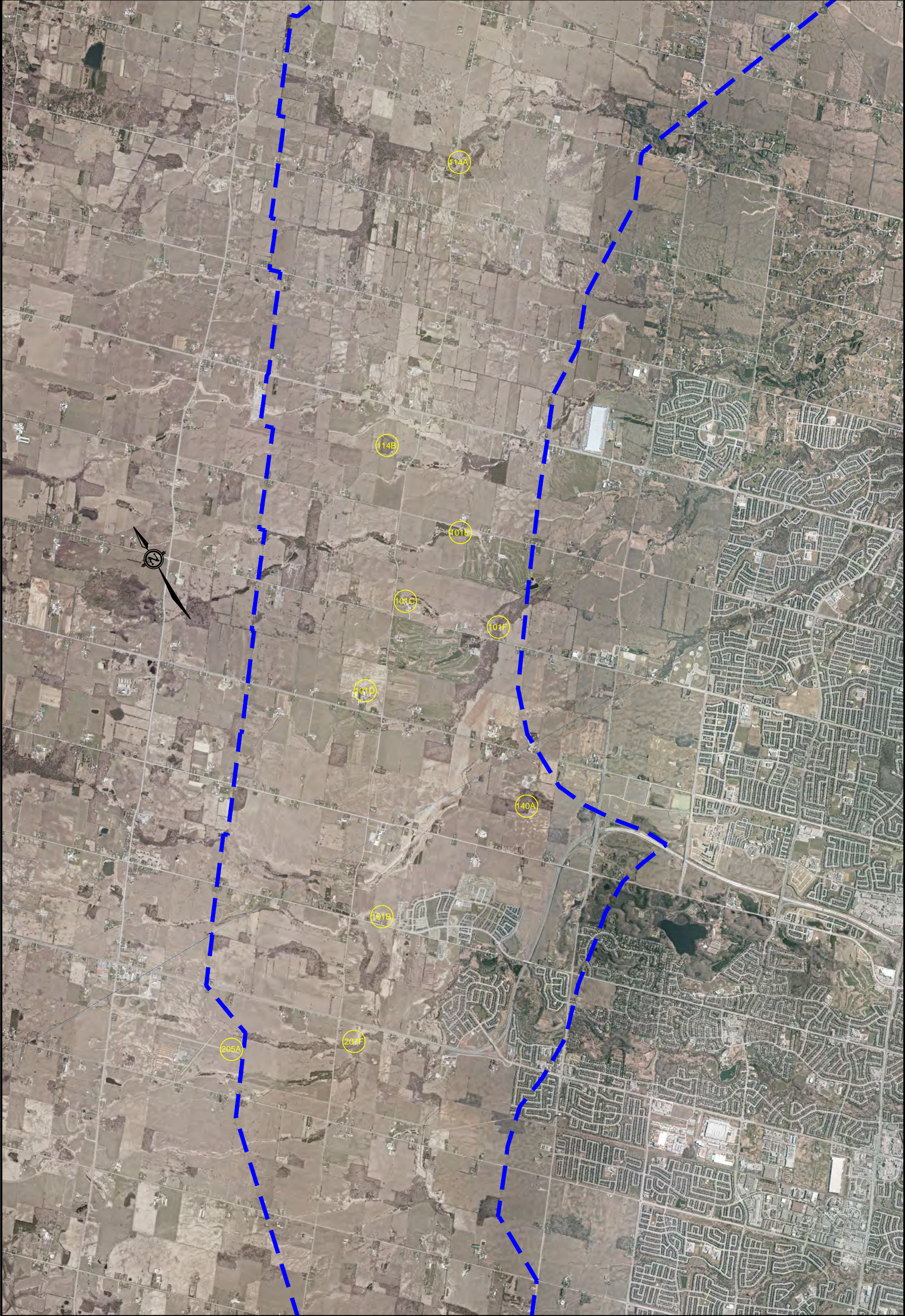
Workshop 3 - Brampton





Part 3



PROJECT: GTA WEST TRANSPORTATION CORRIDOR PLANNING AND EA STUDY, STAGE 2, G.W.P. 13-20001	SCALE: N.T.S.
   	TITLE: FEATURES MAPPING





Workshop 4 - Caledon Part 1



PROJECT: GTA WEST TRANSPORTATION CORRIDOR PLANNING AND EA STUDY, STAGE 2, G.W.P. 13-20001	SCALE: N.T.S.
   	TITLE: FEATURES MAPPING

Workshop 4 - Caledon
Part 2



<div>PROJECT:</div> <div>GTA WEST TRANSPORTATION CORRIDOR PLANNING AND EA STUDY, STAGE 2, G.W.P. 13-20001</div>	<div>SCALE:</div> <div>N.T.S.</div>
<div><div><div>GTA West</div><div>Planning with Vision • Planning for People</div></div><div><div>MMM GROUP</div><div>AECOM</div><div>URS</div></div></div>	<div>TITLE:</div> <div>FEATURES MAPPING</div>

Workshop 4 - Caledon
Part 3

Unique ID	Venue	Feature of Interest	Comment
1 A	W o o d b r i d g e	Cemetery	Guardian Angels Cemetery serves 33% of the City of Brampton.
2 A		Kirby Road - Hwy 400 intersection	Should be clear of all obstructions and ramps.
2 B		Kirby Road	Road should be clear. This would be a major route for services coming from Jane Avenue .
3 A		McLaughlin Road	Buffer from the airport.
4 A		Private property	Property impacts.
5 A		Humber Valley Heritage Trail Association Trail Head	Associatoin has hiking trails along the Humber River and is in the process of developing more trails in the Nashville Tract.
7 A		Kristas Darzs Latvian Home Long Term Care Facility	Possibly planning a rebuild or renovation of by 2025.
9 A		Winston Churchill Boulevard Scenic & Rural Road Cluster	Tree-lined road with cluster of scenic and attractive residences
9 B		Significant woodlot	
9 C		Significant woodlot & viable rural/agricultural business	
9 D		Scenic, meandering and environmentally sensitive part of Credit River	
9 E		Job creating and tax revenue generating employment proposal	
9 F		Key environmental watercourse	
12 A		Heritage forest	25 acres of rare Carolinian hemlock old growth trees, southwest corner of property.
12 B		Humber River	Polluted in 1972 -and now a clean and pristine functioning river with salmon etc.
12 C		Heritage barn	1900 heritage barn -example of old style barn in excellent condition
12 D		Visit to appreicate the feature.	
12 E		Significant archaic relics found on site	Authenticated by Royal Ontario Museum
13 A		Woodlot/PSW/Other Wetlands/TCPL/Future Bram West Parkway	Significant woodlot, future location of Bramwest Parkway, future location of Financial Drive
13 B		Woodlot - part of future Mayfield West Phase #2	- woodlot, Greenbelt - future westerly limit of Mayfield West Phase #2
14 A		Farms	Feed cities
14 B		Highway 400	Currently not utilized by non-motorized transportation
14 C		Weston Road	Cycling route
14 D		King Vaughan Road	Cycling route
14 E		Humber River East	Recreational / wildlife corridor
14 F		Recreational / Wildlife corridor	Spanning Humber River
15 A-F		Traffic issues	Problem with commuter traffic from Higwhay 50 to Highway 400 at Teston Road and Major Mackenzie Drive. Traffic cuts through Nashville and Kleinburg village cores and this will be exacerbated by the influx of about 20,000 new residents between Nashville Road and Major Mackenzie Drive, Huntington Road and Highway 27.
16 A		Residential cluster	25 acres of green space surrounding homes
16 B-F		TRCA protected lands	Pristine Greenbelt lands. Protected plants and wildlife

Unique ID	Venue	Feature of Interest	Comment
17 A	W o o d b r i d g e	Wetlands	
17 B		Woodlots	
18 A		Nashville Management Tract	New management plan being approved by TRCA Board. Trails and trailhead and enhancement areas
18 B		East Humber ANSI & ESAs	Environmentally sensitive lands.
52 A		Private property	Open space with bird habitat.
52 B		Private property	Watercourse.
52 C		3 lots	Lands are unsellable if they are to be located adjacent to the highway.
53 A		Humber Valley 100 ft drop off	Not an ideal location for a highway.
53 B		Humber Valley 100 ft drop off	Not an ideal location for a highway.
54 A		Humber River Valley Trail System / Recreational Area	Do not disturb! Please protect.
54 B		East Humber River	Do not disturb! Please protect.
54 C		Trail system and natural corridor	Please protect.
55 F		Possible area for an interchange	Highway 427 extension north of Major Mackenzie Drive and interchange into GTA West location is unknown but Humber River Valley is an impediment.
57 A		wooded river area	Greenbelt and rivers.
58 A		House with ponds and streams.	
59 A	M i s s i s s a u g a	King Township	Please be sensitive to the rural nature of King Township. In the Oak Ridges Moraine and the Greenbelt. Keep route south of King Vaughan Road. New corridor will take outsiders to other destinations.
59 F		Sensitive Nashville Tract - TRCA lands	Put a high bridge over the sensitive nature. Deep ravine.
19 A		Croatian Cultural Centre Church	Church and community centre with a growing vibrant community. Kids camp and soccer fields.
20 A		Church	Church and cemetery.
22 A		Designated rural area. Piles of dirt and wood chips	Should not have special weight. Other buildings and features are much more significant! Environmental features are more important.
23 B		Future Home of Baptist Church - for Heritage Heights	5 acre parcel land designated for a church. Land hugs residential area. Service Brampton Community. Working with the City of Brampton on zoning / Official Plan.
24 A		Woodlot	Home to many wildlife: birds, deer, fox, possibly endangered species. Core peel grainland.
24 B		Wetland and watercourse	Home to frogs and insects, and wildlife. Protected by the Credit Valley Conservation Authority.
24 C		Woodlot	Home to frogs and insects, and wildlife. Protected by the Credit Valley Conservation Authority.
24 D		Private well	Provides water to private property and farm operations.
24 E		Woodlot	
24 F		Future site of a cemetery	

Unique ID	Venue	Feature of Interest	Comment
26 A	M i s s i s a u g a	Brampton Airport	Too close to the runway - very small planes land and take off. Do not like the big jets.
26 B		Houses	7 residential houses
26 C		Houses	4 residential houses
26 D		Greenbelt	
27 A		Woodlot	
27 B		Woodlot	
28 A		2 old cemeteries	On east and west sides of 8th Line (NE & NW).
45 A		Church	
45 B		Church	
45 C		Wetland	
45 D		Woodlot	
45 E		Woodlot	
45 F		Woodlot	
61 A		Study area for employment lands.	Highway should be located to the north of Healey Road.
63 A		Croatian Roman Catholic Church	Church and associated soccer fields and park have been serving the southern Ontario Croatian community for 30 years.
63 B		Church & Soccer Fields & Picnic Area	Tuesdays and Thursdays at 7pm, dozens of soccer teams practice and compete.
63 C		Future Housing Development	Southern Halton Hills should be developed down to at least 5th Side Road and Winston Churchill.
150 B		Agricultural Property	Avoid property.
46 A		Woodlot	Stay north of the woodlot and ravine.
46 B			Feature needs protection. Stay to the north.
46 C		School	Allow school.
46 D		Grain terminal	Major grain terminal used by the farm community.
46 E		Significant woodlot wetland feature	
102 A	B r a m p t o n	Home United Church	
102 B		New Public School	
102 C		Current Alloo Public School	
103 A		Catholic Cemetery	Approved lands for non-profit Catholic cemetery, including woodlot at northeast section of property.
103 B		Woodlot	
103 C		Woodlot + tributary	
103 D		Woodlot	
103 E		Woodlot	
103 F		Woodlot	
104 A		Existing place of worship	
104 B		Wooded area	
104 C		Wooded area with tributary	
104 D		Development proposed to east of Heritage Road	Connectivity to existing Mount Pleasant GO station and existing community - builds on an important policy of the Provincial Growth Plan regarding complete and connected communities.
104 E		Large contiguous wooded area	Important to maintain large wooded areas as contiguous features since they are not as common.
106 A		Productive farmland.	This is some of the most productive farmland in Ontario.
106 B			
106 C			
106 D			
106 E			

Unique ID	Venue	Feature of Interest	Comment
107 A	B r a m p t o n	Woodlot	Very large. Many wildlife
107 B		Woodlot	
107 C		Wetland	
107 D		Wetland	
107 E		Wetland	
108 A		Upper Canada College Outdoor School (400 acres)	Longest running environment school in Canada - Prince Charles is a patron of the school - 100 years in Norval.
108 B		Proposed Norval Slate Quarry	
108 C		Former home of Lucy Maud Montgomery	L.M.M. a Canadian icon lived in Norval from 1926-1935 - Norval's tourism industry needs to be protected.
108 D		Credit River fisheries	Cold water fish salmon, brook trout.
108 E		Agriculture community	Rural roads, tree canopies, curves / hills protected.
108 F		Adamson Street in Norval is a given road	This road has remained the same for 200 years needs to be protected.
116 A		Cemetery and church	Needs to be protected.
116 B		Pond - creek	
117 A		Valleywood	The 410 extension should continue up Heart lake Road and avoid going through Valleywood, disrupting existing residential area.
118 A		House	
118 B		Cemetery	Heritage feature.
118 C		Airport	Low flying planes.
203 E		Credit Valley footpath	The corner of Winston Churchill and the CN Rail line is just over 1 km from the Credit Valley footpath (a side trail of the Bruce Trail). Credit Valley footpath is at the Northwest corner.
203 F		Humber Valley Heritage Trail	Important to protect this walking path. Connects to other hiking trails.
237 A		Planned interchange	Set aside for future potential 410 interchange.
237 B		Approved industrial development	
237 C		Approved residential development	
238 A		Environment Protection Area	Stream with fish habitat.
239 A		Incorrectly identified as a rural area	Shown as 'rural area' on your generalized land use map. Incorrectly identified. It's gro-bark and piles of dirt.
239 B		Main tributary of Credit River	Large valley system with main trunk of Credit River tributary.
239 C		Regional Jehovah Witness Hall	1000s of members visit the hall on a weekly basis.
239 D		Osmington Regional Commercial Development	1,000,000 sq. ft. regional commercial development application. Direct access to a highway would be ideal.
241 A		Sheridan's greenhouse growing operations	Large scale greenhouse and supporting field farm. 60 employees. Major structure investment and major irrigation water user. Water supply (both surface + well) cannot be further degraded.

Unique ID	Venue	Feature of Interest	Comment
242 A	B r a m p t o n	Maple Lodge Farms	Long standing business in Norval South.
242 B		Winston Churchill Road	Cycling, pedestrians, scenic road (hills and curves). Needs protection.
242 C		Pioneer cemetery / First Nation burial site	Needs protection.
242 D		Bovaird Drive	Street lined with heritage homes - our culture and village will be destroyed by the GTA West going through.
242 E		J.W.L. Forester famous Canadian portrait painting	
242 F		No interchange close to hamlet boundaries	
101 B	C a l e d o n	Cemetery	
101 C		Grain elevator	Important agricultural feature.
101 D		Farm	
101 E		Watercourse.	Runs all the time, 2.3 ft wide, shallow.
101 F		Ditch	This ditch does not run all year. Only during spring runoff - or larger rains.
114 A		Large valley	Stay well north of this valley.
114 B		Heritage woodlot	There is lots of land that is clear north of this woodlot.
114 C		Humber River	Probably the friendliest place to cross the Humber River.
122 A		CBC Tower	
140 A		Hwy 410 extension	Prefer that existing Highway 410 be extended directly north as opposed to widening the leg of Highway 410 running west.
205 A			Will submit detailed comments about this feature.
205 B		Obstacles	Obstacle clearance around airports.
205 C			4 circuit patterns.
205 D		Runway clearance	Clearance at the end of each runway.
207 A		Cemetery lands	
207 E		Large livestock operation	If corridor was to go further north, it would not impact the natural heritage area and the large established livestock operation.
207 F		Natural heritage and valleylands	Corridor should be north of Old School Road at Highway 10 to preserve valleylands and provide buffer from residential development.
220 A		Private property	Concerns about property impacts and resale value.
220 B		Croatian Centre	185 acres, large church, community centre year round.